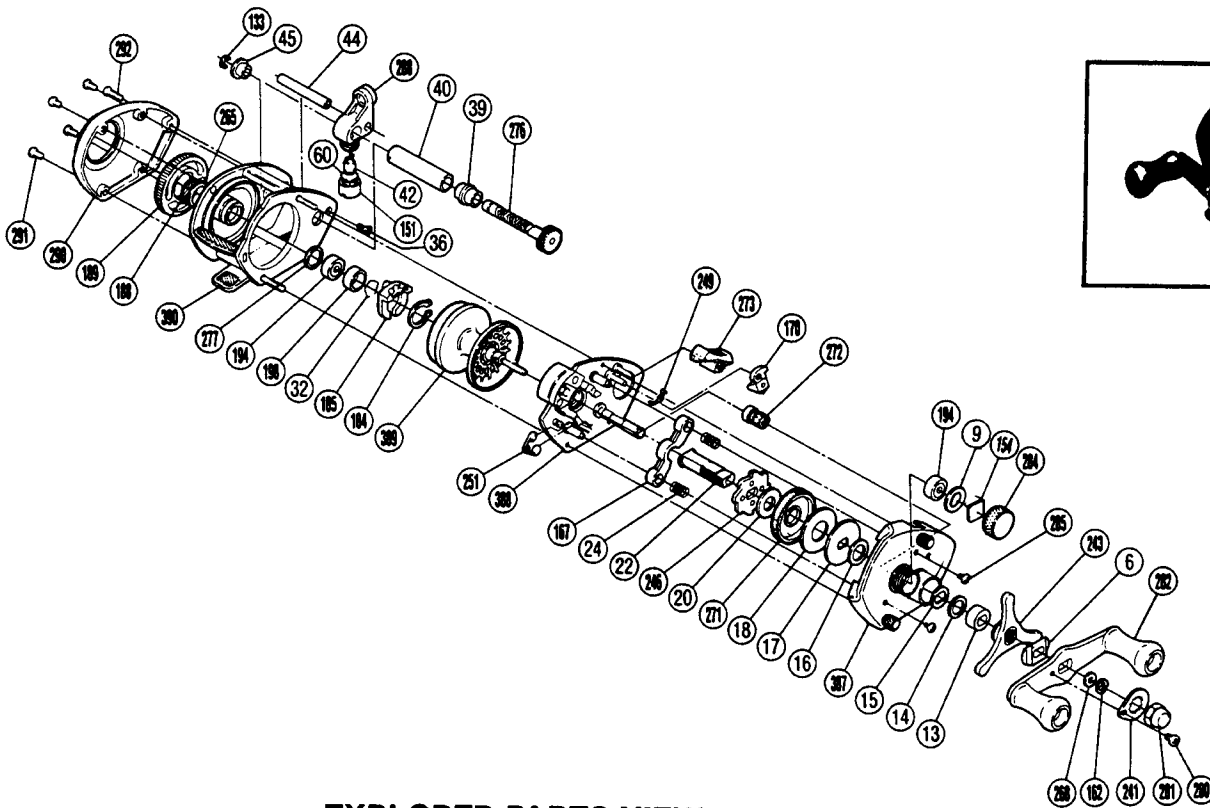


# SHIMANO®

## BANTAM® MAG PLUS™ 150X80



**EXPLODED PARTS VIEW**

**TO ORDER**  
Original Key # and Original Code # are for cross-reference only. Please order parts using the Part # column and the prefix "BNT" which indicates the Bantam reel series.

### PARTS LIST

PART #	ORIGINAL KEY #	ORIGINAL CODE #	DESCRIPTION	PART #	ORIGINAL KEY #	ORIGINAL CODE #	DESCRIPTION
280.	1.	7-0014 3011	Handle Nut Plate Screw	249.	30.	7-1852 0637	Anti-Reverse Switch Spring
281.	2.	7-2123 0644	Handle Nut	388.	31.	6-1809 0616	Set Plate Assembly
241.	3.	7-2124 0637	Handle Nut Plate	251.	32.	7-1821 0637	Retractor Spring
162.	4.	7-1861 0610	Drive Shaft Retainer	389.	33.	7-1701 0616	Spool Assembly
268.	5.	7-2101 0610	Drive Shaft Washer (A)	184.	34.	7-0040 5070	Magnet Retainer Lock
282.	6.	6-2129 0613	Handle Assembly	185.	35.	7-1593 0612	Magnet Retainer Assembly
6.	7.	7-2116 0610	Friction Washer (A)	32.	36.	7-1516 0610	Bearing Retainer
243.	8.	6-2119 0637	Star Drag Assembly	198.	37.	7-1599 0612	Bearing Spacer
13.	9.	7-2113 0610	Bushing (B)	277.	38.	7-1515 0637	Spacer (B)
14.	10.	7-2111 0610	Friction Washer (B)	276.	39.	6-1609 0613	Worm Shaft Assembly
15.	11.	7-2112 0610	Drag Spring Washer	39.	40.	7-1605 0610	Worm Bearing (A)
285.	12.	7-0013 0051	Set Plate Screw	40.	41.	7-1606 0610	Level Wind Guard
84.	13.	7-2010 0644	Cast Control Cap	288.	42.	6-1619 0613	Line Guide Assembly
9.	14.	7-2060 0610	Spacer (A)	42.	43.	7-1611 0610	Line Guide Pawl
154.	15.	7-2052 0600	Felt Washer	60.	44.	7-1431 0610	Line Guide Pawl Washer (Optional)
194.	16.	7-2006 0110	Bearing	151.	45.	7-1612 0600	Pawl Cap
387.	17.	6-2019 0616	Right Side Plate Assembly	44.	46.	7-1607 0610	Stabilizer Bar
16.	18.	7-2110 0610	Friction Washer (C)	45.	47.	7-1601 0610	Worm Bearing (B)
17.	19.	7-2108 0610	Key Washer	133.	48.	7-1618 0600	Worm Shaft Retainer
18.	20.	7-2107 0610	Drag Washer	390.	49.	6-1509 0616	Frame Assembly
271.	21.	7-2106 0613	Drive Gear	265.	50.	7-0020 9030	Thrust Washer Spacer (Optional)
20.	22.	7-2105 0610	Drive Shaft Washer (B)	188.	51.	7-2005 0610	O Ring
246.	23.	7-2103 0637	Anti-Reverse Ratchet	189.	52.	7-1442 0632	Magnetic Control Dial
22.	24.	7-2102 0610	Drive Shaft	290.	53.	7-1401 0613	Left Side Plate
24.	25.	7-1817 0610	Yoke Spring	291.	54.	7-0013 0041	Left Side Plate Screw
167.	26.	7-1816 0631	Yoke	292.	55.	7-0013 0061	Left Stabilizer Bar Screw
272.	27.	6-1729 0613	Pinion Gear Assembly	36.	56.	7-0012 0010	Right Stabilizer Bar Screw
170.	28.	7-1824 0631	Anti-Reverse Pawl Assembly				
273.	29.	7-1850 0613	Anti-Reverse Switch				